



AutoSnaply.

AutoSnaply



AutoSnaply

Detect damage to objects using photos & videos, eliminating the need for physical inspection. Our comprehensive vehicle inspection system offers a holistic inspection solution for a variety of industries:

- Car
- Insurance
- Services
- Utility
- Government
- Health

Modules

- Damage Detection
- Claim Assessment
- Fraud Detection

Benefits

- Accurate and efficient vehicle diagnostics.
- Improved reliability in identifying problems.
- More efficient inspection processes for users.
- Self-service
- Cost Reduction
- Customer Satisfaction

AutoSnaply.

AutoSnaply makes your business easier with the AI Video & Photo vehicle inspection app.



•Validation of exterior and interior views



•License plate reading - OCR



•Detection of vehicle damage (scratches, stains, damage)



•Vehicle Identification Number (VIN) reading



Our car damage inspection system can detect 19 types of damage metal, plastic, fiber, glass and rubber auto parts.



Metal/Plastic/Fibre Parts

- Spot/Scratch
- Dents - Shallow, deep & design
- Stitch/Screw
- Broken



Glass Parts

- Chip off
- Large crack
- Small crack
- Spider



Rubber Parts

- Large crack
- Small crack
- Puncture
- Chip off



Undercarriage

- Rust
- Leakage



Internal/hidden damage

- 75+ internal damages e.g. tail gate lock, radiator



Interior damages

- Seats torn
- Dashboard crack
- Dirt

Use the power
Image recognition with
the help of AI



Why AutoSnaply.?

Powerful AI automation

100% customer-oriented.



There's no installation

The application is used through a web browser.



There is no fixed schedule

The user chooses a convenient time for the inspection.



Speed

We need a few minutes to evaluate the vehicle.

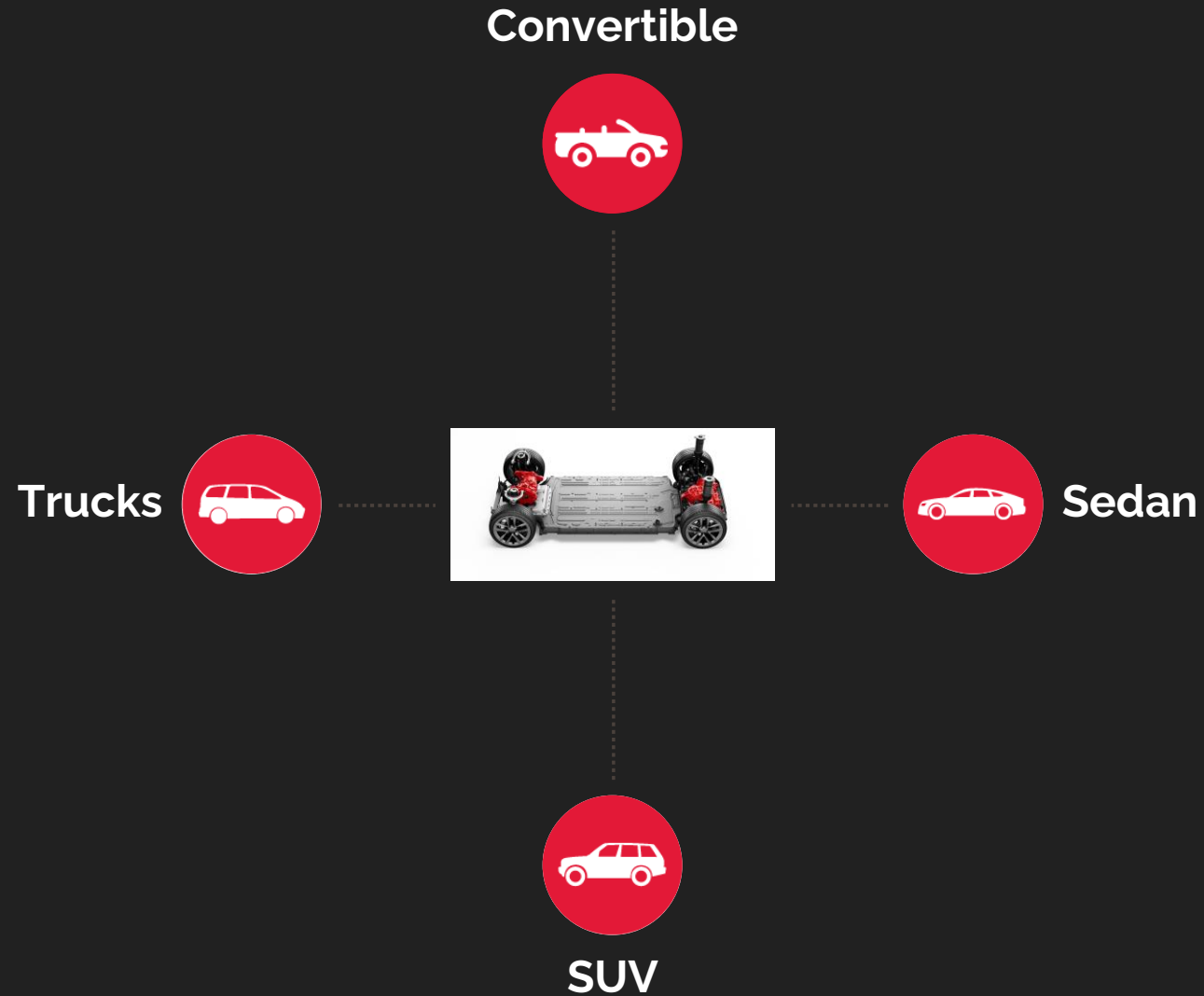


Precision

95-99% accuracy in damage detection



Wider market opportunity

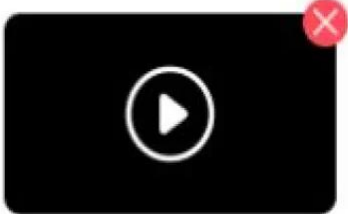


360° Video Capture

We detect damages on items using videos, eliminating the need for physical inspections

[View Instructions](#)

[See an example](#)



01

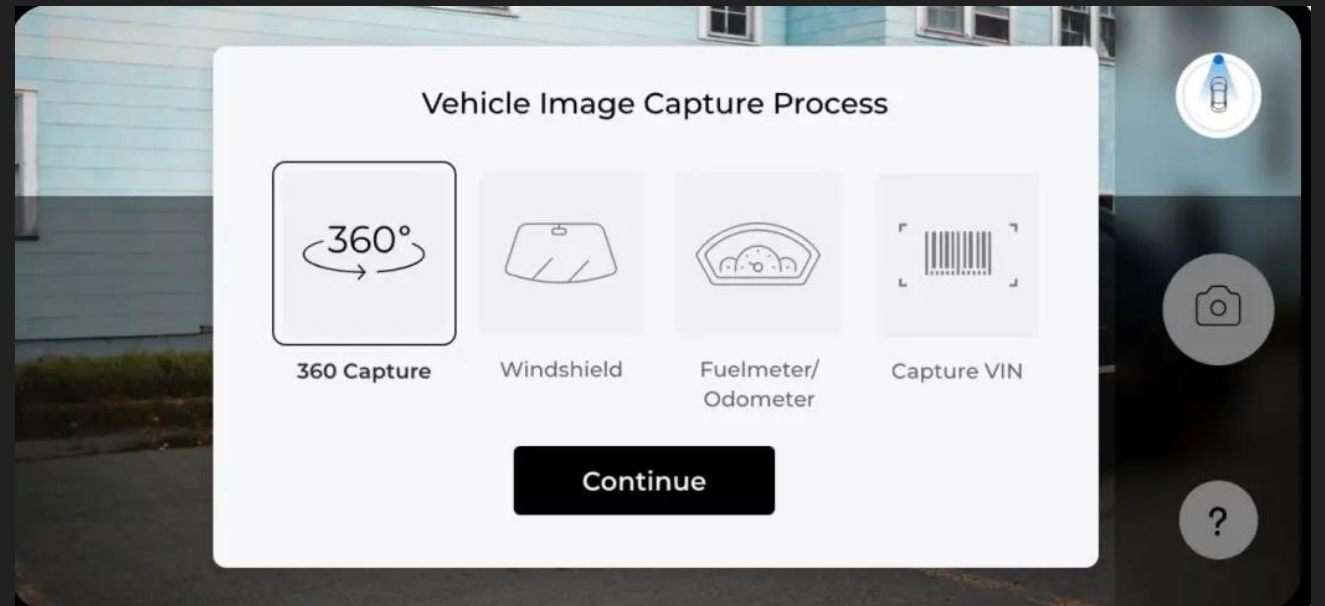
Get a secure link to accept requests

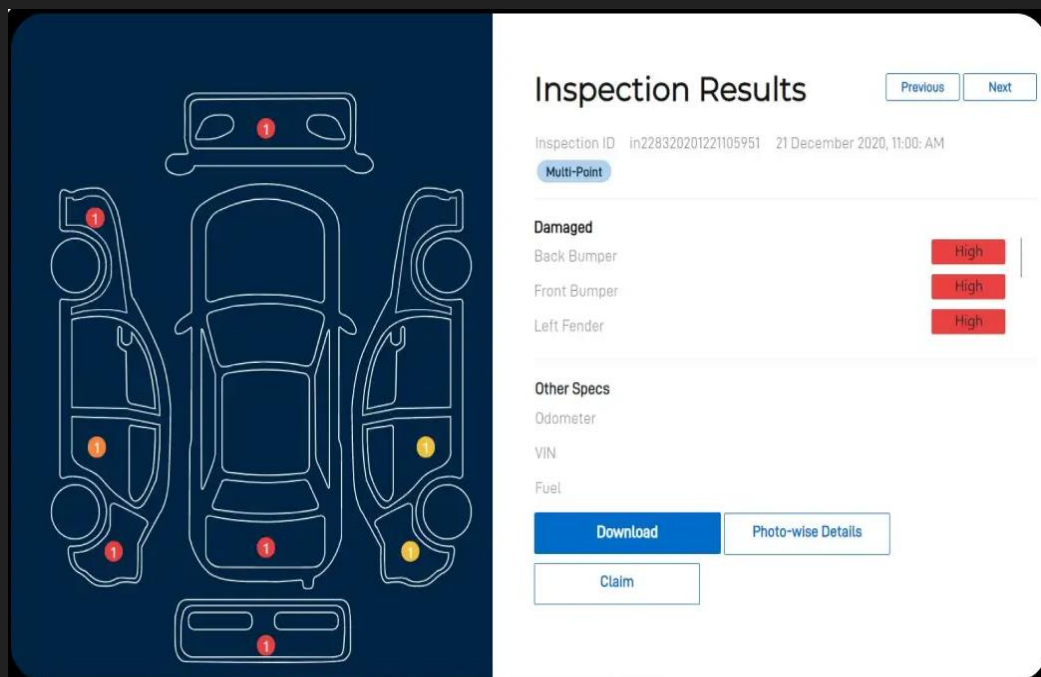
The buyer/craftsman/estimator receives an SMS (text message) and/or Email containing a link to assess the damage & claim.

02

Capture Image & Video Over Phone for Photo-Based Assessment

When opening a connection on a smartphone, the client can use the device's camera to capture videos or photos.





03

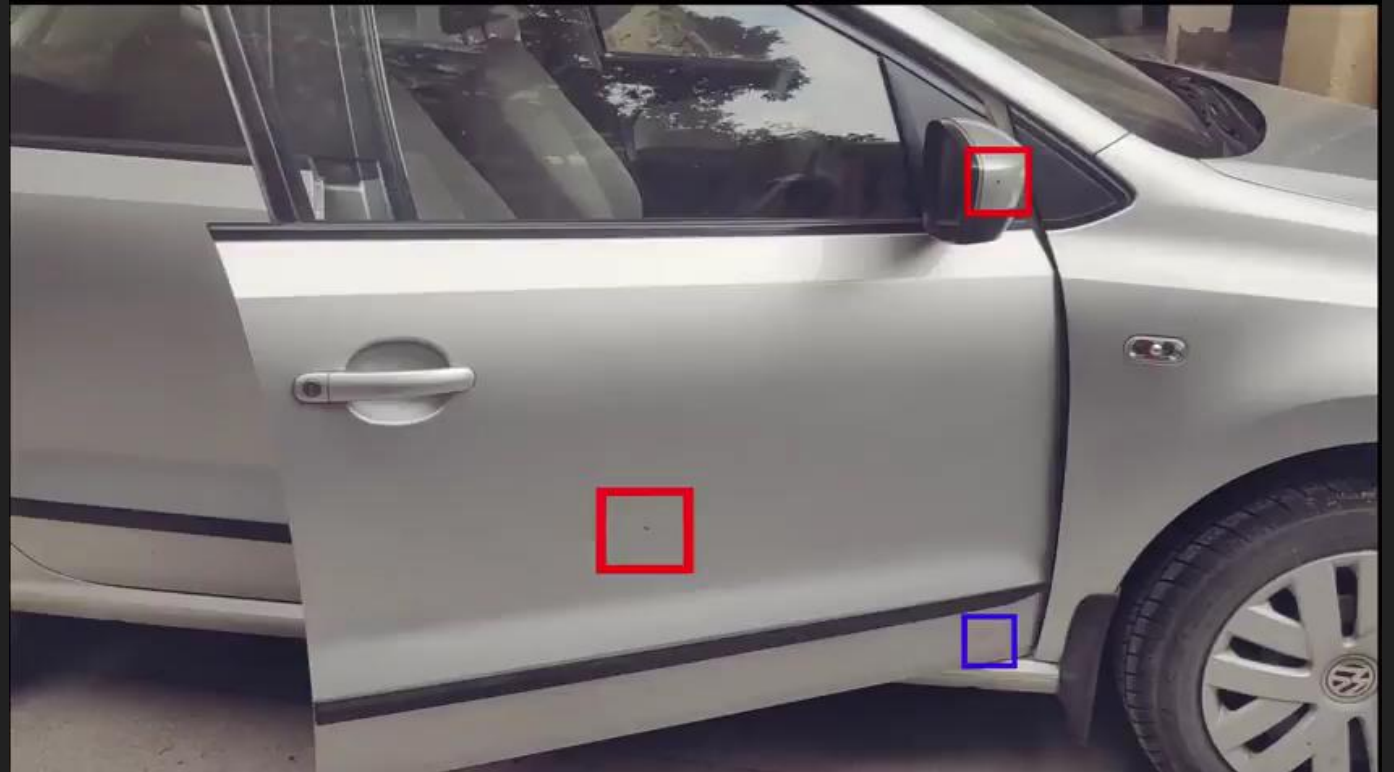
The video is analyzed through AI Inspection

The footage is then analyzed via an AI inspection, and the reports are shared with the client within seconds.

AutoSnaply.

Versatile and robust tool.

Introduction to Video Inspection



In-app video report

An example of a video inspection. Keep in mind that only basic visuals were used, and the AI will be customized according to the company's brand.

Advanced fraud checks for underwriting and claims

J [Old damage & Single/Multi point damage](#) ¹

I [Accident description analysis](#) ¹

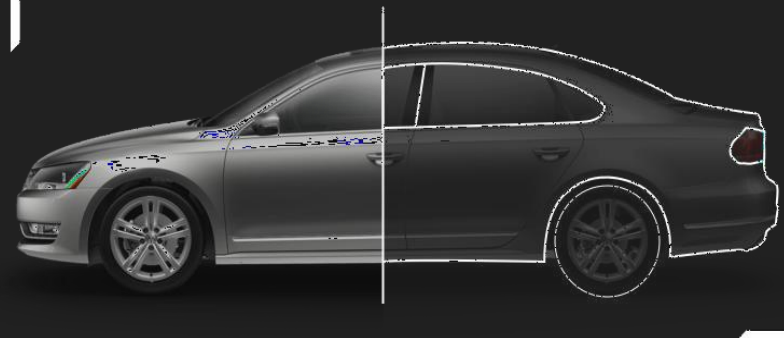
H Personal injury^{1, 3}

G Location detection: [Garage/Workshop, Multiple locations](#) ³

K Web app – only live car capture (no gallery uploads)

A [Vehicle swapping/twinning](#)

B Video capture



C Match VIN and License plate using external APIs ²

F [Metadata analysis: GPS coordinates, timestamps](#)

E [Photoshop or Image manipulation](#)

D [VIN and License manipulation](#) ²

1 - Only relevant to motor claim and not pre-inspection


2 - This is a country specific solution, that needs customization for each country.

3 - Feature is under development

A. Video Swapping

Capturing video of one car and VIN of another car.



Inspection Status	Action Needed			
Policy Issued	Not issued			
Fraud Detected	At 1:07 there is a potential vehicle swap			
 Front/Rear Items	Front Bumper	Intact	Rear Bumper	deep_dent, scratch_or_spot
	Right Taillight	crack	Left Taillight	Intact
	Hood	Intact	Left Headlight	Intact
	Right Headlight	Intact	Taillight Panel	Intact
	Tail Gate	deep_dent, scratch_or_spot, tear	Left Front Bumper	Intact
	Right Front Bumper	Intact	Left Rear Bumper	Intact
	Right Rear Bumper	Intact	Centre Rear Bumper	Intact
	Bumper Grill Top	Intact	Centre Front Bumper	Intact
	Emblem	missing_part, AI uncertain	Bumper Grill Bottom	Intact
	Fuel Door	Intact	Tow Hook Cover Front	Intact
	Tow Hook Cover Rear	Intact	Front Bumper Cover	Intact
	Front PDC Sensor	Intact	License Plate	Intact

VIN manipulation

Fake VINs



Photoshop or Image manipulation



Mirror Images



Metadata analysis: GPS coordinates, timestamps

Any gap (x threshold) between timestamps and GPS coordinates are flagged as a potential fraud.



Photo Type FRONT ISOMETRIC LEFT
GPS coordinates H:40.11545740018092, V:-86.13062379680639
Timestamp Jun 16 2023 17:45



Photo Type NA
GPS coordinates H:40.11545740018092, V:-86.13062379680639
Timestamp Jun 16 2023 17:41

Old or Prior damages

Summary claim report

S. No.	Part name	Type of damage	Repair / Replace	Working hours	Painting %
1	FRONT BUMPER	Scratch, Dented	D) Repair *	15	-
2	REAR RIGHT DOOR PANEL	Scratch, Dented	Repair	C) 5.51	C) 93

* This part has an old damage D)

- A) 2 damages are detected :
- ▷ Green character is good to proceed.
 - ▷ Orange character is medium-doubt.
 - ▷ Red character is high-doubt.
 - ▷ Orange/Red part needs to be checked.

- B) Prior damages already excluded from the report
- ▷ No left side damage included are mentioned.

- C) Right side door panel damage is not such heavy.
- ▷ Result shows 93% paint percentage, but as per the picture, only 50% paint percentage was required.
 - ▷ This estimate needs to be revised as per the recommendation by the adjustor.

- D) Prior/Old damage detected on front bumper
- ▷ Front bumper damage seems to be unrelated to the main damage on the right rear door. As a result, there is a high probability that the front bumper damage is coming from an older accident and should thereby, not be repaired under the claim (**Fraud detection**). "old damage" warning message also raised as shown "*" .



Autosnaply.com